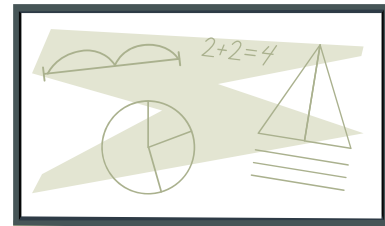




**SB Creation**  
ISO 9001 : 2015 Certified

# SCHOOL MANAGEMENT SOFTWARE

- A unit of RENU SB CREATION SOFTWARE PVT. LTD.



[www.sbcreationgroup.com](http://www.sbcreationgroup.com)

## Company Overview

Renu SB Creation Software Pvt Ltd (SB Creation) is a Software Development ,Web Solutions and Substation Design Provider Company.

We started our journey in 2005.

We have aimed to provide affordable detail engineering BOQ along with layout for various substation projects thermal power plant projects, PV based solar powerplant projects and web design, custom programming, readymade scripts, forum templates, search engine optimization to our clients.

We have our own team of professionals, and we do not outsource our job to complete a project. We also develop MLM Software, Microfinance Software, ERP software, Digital recruitment processes, Core banking solutions, Accounting software, Education ERP, Travel and real estate CRM software, and IOT development.



**SB Creation**

ISO 9001 : 2015 Certified

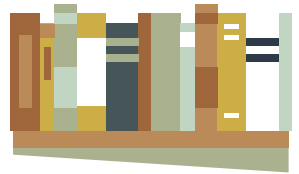
## Software Overview

In the present time it is really challenging to manage school without any software. There are various types of ready to use School Management Software in the market but we provide totally customized and advance feature school management software to our clients from Ahmedabad, India. School Management System is powerful utility software for all size educational organization. It helps to manage students' data, staff management, employee payroll management, School schedule management, student fees management, online attendance report and other hundreds of features. This School Management Software can boost the productivity and help to reduce man power of management team. This system is work with cloud server so it is completely online and web based so use in computer as well as mobile applications.

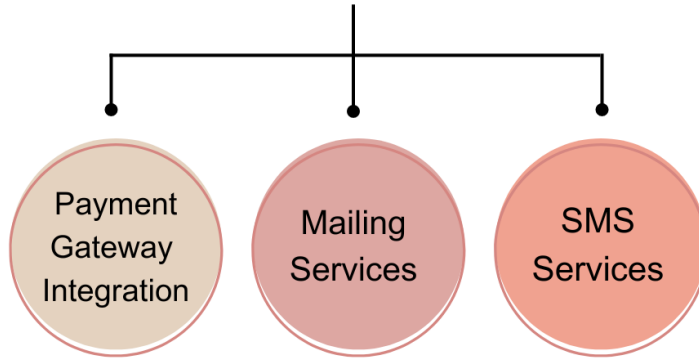
We, at [www.sbcreationgroup.com](http://www.sbcreationgroup.com) are providing our perfect and accurate School Management Software over 16+ years.

[www.sbcreationgroup.com](http://www.sbcreationgroup.com)





## We Provide





**SB Creation**  
ISO 9001 : 2015 Certified

## Our Benefits

- Automatic report generation
- Integrated with Auto SMS/Email
- No need to manual entry for attendance
- All student Accounts management/Fees collection report
- Get engaged with all students' parents
- Send alerts to parents for students leave and Attendance



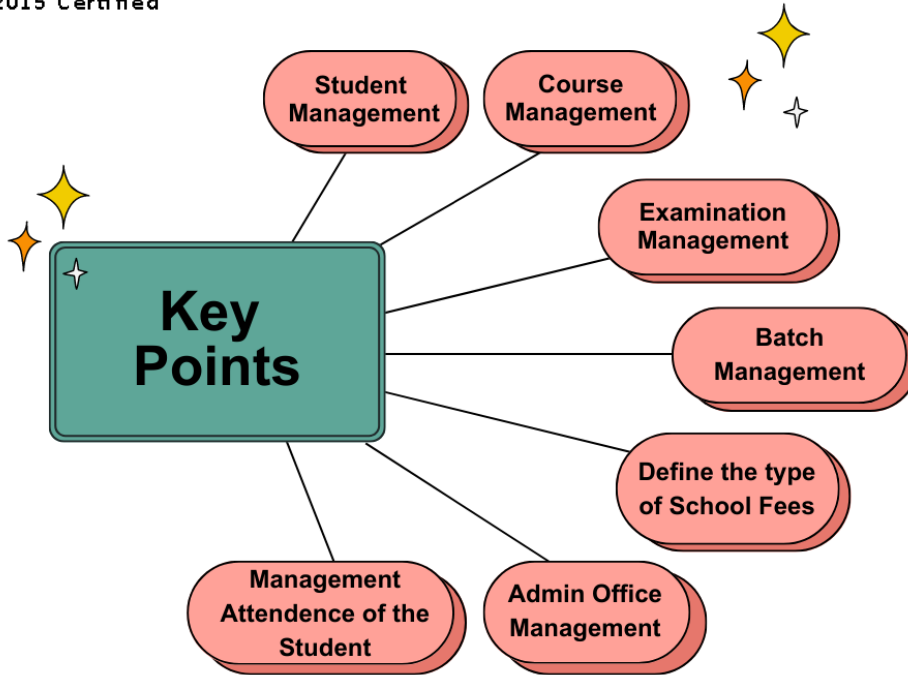
[www.sbcreationgroup.com](http://www.sbcreationgroup.com)





**SB Creation**

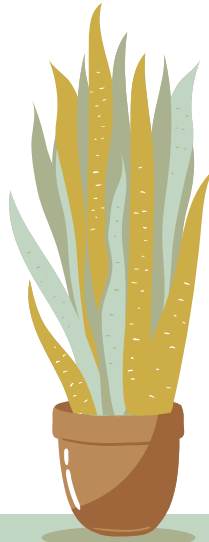
ISO 9001 : 2015 Certified





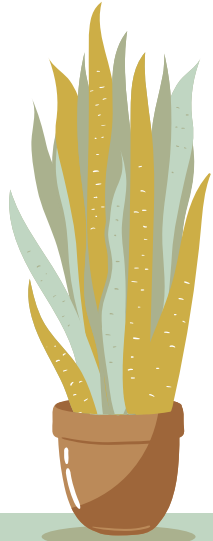
## Features in Detail

- 1. Student Management:** The student database includes basic information including address, sibling names and grades, parents, and contact information. This database is linked to all of the student's school classes and activities. Additional information regarding billing, accounts, and medical history are easily added by administrators.
- 2. Academic Management:** This feature is designed to streamline and automate various academic processes and tasks within an educational institution. It provides administrators, teachers, and other staff members with tools and functionalities to efficiently manage and track academic activities, student performance, curriculum planning, scheduling, grading, and more.
- 3. Student Assessment:** This feature is designed to facilitate the process of evaluating and grading students' academic performance. It provides a comprehensive system for recording, managing, and analyzing student assessments, including tests, quizzes, assignments, projects, and exams.





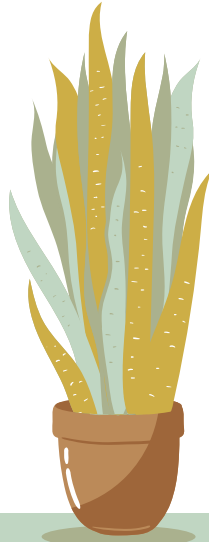
- 4. Library Management:** This module helps schools manage their library resources, including cataloging books, tracking borrowing and returns, and generating library reports.
- 5. Transport & Hostel Management:** For schools providing transportation services, the software may include features to manage bus routes, track vehicle locations, and communicate with parents about transportation updates. The hostel management feature is designed to streamline and automate various tasks and processes related to managing the school's hostels or dormitories. It helps in efficiently managing student accommodations, room allocations, and related administrative tasks.
- 6. Fees Management:** Schools can use the software to manage student fees, track payments, generate invoices, and send payment reminders to parents or guardians. It may also include financial reporting and budgeting tools.
- 7. Employee Management:** This feature is designed to streamline and automate various administrative tasks related to managing the school's staff. It provides a centralized system to store and manage employee information, attendance, payroll, and other relevant data.





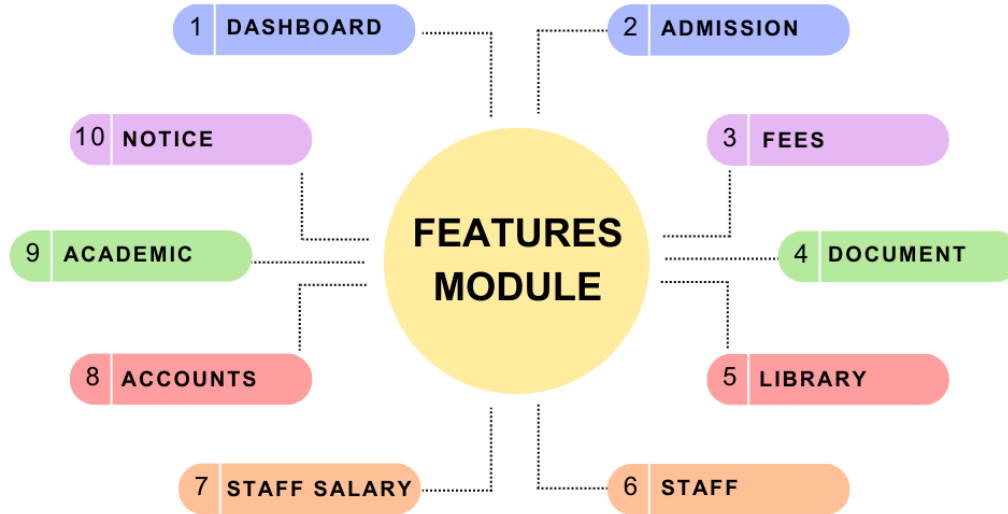


8. **Communication & Engagement System:** This is an essential feature that facilitates effective communication and engagement between various stakeholders within the school community, including administrators, teachers, students, and parents. It enhances communication channels and streamlines the flow of information, leading to better collaboration and improved engagement.
9. **Human Resource Management:** This feature assists in managing employee records, attendance, payroll, leave management, and other HR-related tasks.
10. **Account & Taxing Setting:** This feature helps administrators and accountants manage financial aspects of the school's operations, including budgeting, invoicing, payments, and tax-related tasks.
11. **Examination and Assessment:** School management software often includes tools for creating and managing exams, grading assessments, and generating performance reports.





**SB Creation**  
ISO 9001 : 2015 Certified



[www.sbcreationgroup.com](http://www.sbcreationgroup.com)

# Dashboard



A School Management Software dashboard is a centralized interface that provides administrators, staff, and parents/guardians with an overview and control over various fee-related processes and information within an educational institution or organization. The dashboard typically offers a range of features and functionalities to manage fees, payments, invoices, and related financial activities. It ensures efficient fee collection, reduces manual workloads, improves communication, and provides stakeholders with real-time access to relevant financial information.

# Admission

Dashboard Admission Fees Document Library Staff Staff Salary Accounts Academic Notice My Profile Logout

### Add New Academic Year

Academic Year  Save Reset

### Added Academic List

Search Academic Year  Export Data to Excel

Id	Academic Year	Active Status	Action
8	2021-2024	True	<span>✎</span> <span>✖</span>
6	2020-2023	True	<span>✎</span> <span>✖</span>
5	2019-2022	True	<span>✎</span> <span>✖</span>
4	2018-2021	True	<span>✎</span> <span>✖</span>
3	2017-2020	True	<span>✎</span> <span>✖</span>

### Student Registration

Name \*    Gender \*  Religion \*  DOB \*

POB \*  Marital Status \*  Nationality \*

Aadhar  Blood Group \*  SabhSathi

Scholarship  Scholarship No.  Scholarship Amount

Disability \*

#### Parent Details

Father \*     
 Income \*  Occupation \*  Qualification \*

Mother \*     
 Income \*  Occupation \*  Qualification \*

#### Present Address

Address \*  Address  City \*  District \*   
 State  PinCode

#### Permanent Address

Same as Present Address

Address \*  Address  City \*  District \*   
 State  PinCode

#### Contact Details

Phone No  Phone No  Mobile \*  Mobile  Email \*

#### Local Guardian

Guardian Name  First Name  Middle Name  Last Name  Relation   
 Address  Contact

#### Transfer Details

Transfer From  Transfer From  TC No  TC No  Reason

#### Payment Details

Payment Mode \*

#### Admission Details

Academic Year \*  Registration Date \*

#### Higher Secondary Details

HS Board \*  HS Registration No \*  Registration Number   
 HS Registration Year \*  Previous Registration ? \*

#### Bank Details

Account Number  Account Number  Bank Name  Bank Name   
 Branch Name  Branch Name  Account Holder Name  Account Holder Name   
 IFSC Code  IFSC Code

#### Upload Details

Photo \*  No file chosen   No file chosen   
 Signature \*  No file chosen   No file chosen   
 More Documents  No file chosen

Save Reset

# Fees

**Add New Fees Head**

Academic:

Year:  Fees Group:

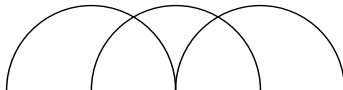
Amount:  Discount:  NO  YES

Fees Head:

Applicable For:

**Added Fees Group List**

[www.sbcreationgroup.com](http://www.sbcreationgroup.com)



**Add New Fees Group**

Fees Group Title:

**Added Fees Group List**

Search Stream:

Id	Fees Group	Active Status	Action
19	Magazine1	True	<a href="#">/</a> <input type="button" value=""/>
18	Student Aid	True	<a href="#">/</a> <input type="button" value=""/>
17	Athletics	True	<a href="#">/</a> <input type="button" value=""/>
16	Student Union	True	<a href="#">/</a> <input type="button" value=""/>
15	Lib. Caution	True	<a href="#">/</a> <input type="button" value=""/>
14	University Registration	True	<a href="#">/</a> <input type="button" value=""/>
13	Reader	True	<a href="#">/</a> <input type="button" value=""/>
11	Identity Card	True	<a href="#">/</a> <input type="button" value=""/>
12	Form Fee	True	<a href="#">/</a> <input type="button" value=""/>
4	Union	True	<a href="#">/</a> <input type="button" value=""/>
5	Development	True	<a href="#">/</a> <input type="button" value=""/>
6	Building	True	<a href="#">/</a> <input type="button" value=""/>
7	Examination	True	<a href="#">/</a> <input type="button" value=""/>
8	University sports	True	<a href="#">/</a> <input type="button" value=""/>
	Student Health Home	True	<a href="#">/</a> <input type="button" value=""/>
10	Tuition Fees	True	<a href="#">/</a> <input type="button" value=""/>
3	Electricity	True	<a href="#">/</a> <input type="button" value=""/>
2	Lib. Subscription	True	<a href="#">/</a> <input type="button" value=""/>
1	Admission	True	<a href="#">/</a> <input type="button" value=""/>

# Document

## Add New Document Head

Document Head

Save

Reset

## Added Document Head List

Export Data to Excel

Id	Document Head	Active Status	Action
11	Sports Document	True	<a href="#">Edit</a> <a href="#">Delete</a>
9	Letter Received Register	True	<a href="#">Edit</a> <a href="#">Delete</a>
8	Letter Issue Register	True	<a href="#">Edit</a> <a href="#">Delete</a>

# Library

### Add New Author

Author Name

Description

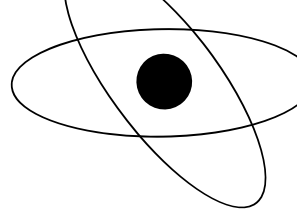
[Save](#) [Reset](#) [Import data from Excel](#)

### Added Author List

[Export Data to Excel](#)

Id	Author Name	Description	Active Status	Action
27	Rabindra Nath Tagore	Gitanjali	True	<a href="#">Edit</a> <a href="#">Delete</a>
26	Bipin Chandra	History Writer	True	<a href="#">Edit</a> <a href="#">Delete</a>
25	Roy Martin	English Paper	True	<a href="#">Edit</a> <a href="#">Delete</a>

# Staff



Dashboard | Admission | Fees | Document | Library | Staff | Staff Salary | Accounts | Academic | Notice | My Profile | Logout

### Add New Department

Department Name  Save Reset

### Added Department List

Search Department  Export Data to Excel

Id	Department Name	Active Status	Action
19	NON-TEACHING STA	True	<a href="#">↗</a> <span>✖</span>
15	NUTRITION	True	<a href="#">↗</a> <span>✖</span>
12	HISTORICAL SCIENCE	True	<a href="#">↗</a> <span>✖</span>
11	GEOGRAPHY	True	<a href="#">↗</a> <span>✖</span>
10	SOCIOLOGY	True	<a href="#">↗</a> <span>✖</span>

Powered by SB Creation | Tech Support: info@sbcreationgroup.com 033-4061 6259 / 033-4603 8751

Dashboard | Admission | Fees | Document | Library | Staff | Staff Salary | Accounts | Academic | Notice | My Profile | Logout

### Add New Designation

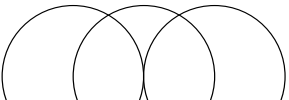
Designation Name  Save Reset

### Added Designation List

Search Designation  Export Data to Excel

Id	Designation Name	Active Status	Action
24	PEON(SC)	True	<a href="#">↗</a> <span>✖</span>
23	SWEEPER	True	<a href="#">↗</a> <span>✖</span>
22	ATTENDANT	True	<a href="#">↗</a> <span>✖</span>
21	GUARD	True	<a href="#">↗</a> <span>✖</span>
20	CASHIER	True	<a href="#">↗</a> <span>✖</span>

Powered by SB Creation | Tech Support: info@sbcreationgroup.com 033-4061 6259 / 033-4603 8751







**SB Creation**  
ISO 9001 : 2015 Certified

# THANK YOU

**Do you have any questions?**

Email Us: [info@sbcreationgroup.com](mailto:info@sbcreationgroup.com)

Contact Us- +91-9231828342  
+91-8918796420  
+91-3335474632

Visit Us- [www.sbcreationgroup.com](http://www.sbcreationgroup.com)

## Address

36, Ballygunge gardens,  
2<sup>nd</sup> Floor,  
Kolkata-700 019  
West Bengal, India

